



Solutions for modern  
building design



# SHOWER BASE ELEMENT

for PVC and linoleum





Solutions for modern  
building design

## **LUX ELEMENTS TUB®-PL** Shower base element for PVC and linoleum



## Ensures drainage under soft floor coverings

One can find them in hotels, public and private nursing facilities, hospitals or hostels: resistant and economical floor coverings made from PVC and linoleum. The designs are very varied today in order to also satisfy the increased demands for optical appearance.

If a shower is installed with such soft floor coverings in a wet area, then a highly resistant shower element is necessary to comply with all the relevant pressure points which are exerted e.g. by wheelchairs or walking aids. The solution for fulfilling these demands is called LUX ELEMENTS TUB®-PL.



[www.luxelements.com](http://www.luxelements.com)



# LUX ELEMENTS TUB®-PL

## Shower base element for PVC and linoleum

### The TUB-PL system: strong, secure and flexible

The new shower base TUB-PL has been especially designed for applications with alternative floor coverings such as e.g. PVC and linoleum. The highly pressure-resistant surface of the elements is waterproof and fitted with a slope.

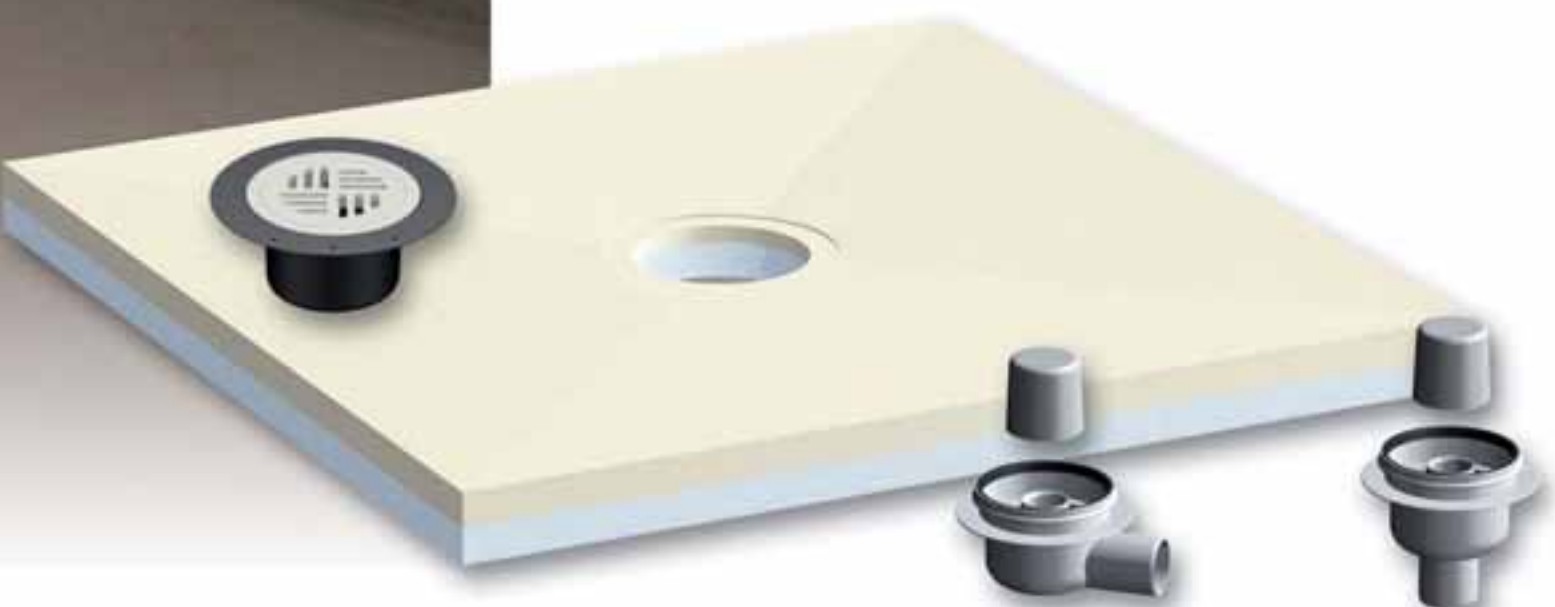
As the shower bases are individually dimensioned, they are perfectly suited for the specific building conditions. The factory production methods in the LUX ELEMENTS works ensure this flexibility.

#### Appropriate drainage technology

The matching drainage technology consists in the standard version of a grate fitting frame and slotted grate made of plastic as well as a horizontal or vertical floor drain support DN 50 with odour trap. Alternatively, a design variant made of stainless steel is also available.

If different, building-related drainage technology be required or desired, this can also be combined with the shower bases TUB-PL after checking the technical feasibility.

The TUB-PL system impresses with its flexibility, not only in the dimensioning but also with its drainage technology. The installation – as with all other shower bases from LUX ELEMENTS – is easy, fast, clean and secure.



# TUB-PL – the principle

TUB-PL are high pressure-resistant, hard foam shower base elements with slope for receiving alternative floor coverings such as e.g. PVC or linoleum. The shower trays are adapted individually to the building and made to measure.

## Slotted grate

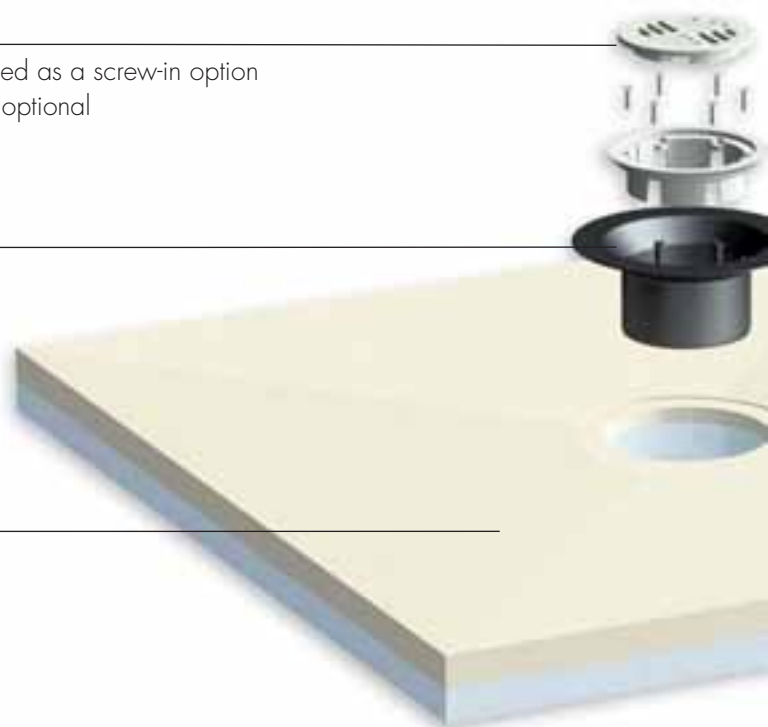
Made from a bright synthetic material which can be either installed as a screw-in option or loosely laid in position, design variant made of stainless steel optional

## Grate fitting frame

With a screwable lock frame for secure fitting of the floor covering

## Shower base element

High pressure-resistant, multi-layered material with a robust and water resistant surface finish.





# LUX ELEMENTS TUB<sup>®</sup>-PL

Shower base element for PVC and linoleum

## Benefits at a glance

- **Factory fitted slope**  
Produced individually  
according to drain position
- **Flexibility with the shapes  
and drainage technology**  
Tailor-made production as well as individual  
drainage positions and technology
- **No drying time required**  
Easy, clean and fast installation
- **Approved for  
wheelchair loads**  
The high pressure-resistant surface  
finish ensures safety



My LUX ELEMENTS partner dealer:

**D**

**LUX ELEMENTS GmbH & Co. KG**

An der Schusterinsel 7

D - 51379 Leverkusen-Opladen

Tel. +49 (0) 21 71/72 12-0

Fax +49 (0) 21 71/72 12-10

E-Mail [info@luxelements.de](mailto:info@luxelements.de)

Web [www.luxelements.com](http://www.luxelements.com)

**F**

**LUX ELEMENTS S.A.S**

ZI-31, rue d'Ensisheim

F - 68190 Ungersheim

Tél. +33 (0) 3 89 83 69 79

Fax +33 (0) 3 89 48 83 27

E-Mail [info@luxelements.fr](mailto:info@luxelements.fr)

Web [www.luxelements.fr](http://www.luxelements.fr)