



Profilitec introduces a new exciting solution to its product range dedicated to modern building environments, extending the use of large format ceramic tiles in the bathroom.

Linear Drain is a system for walk-in showers which, eliminating the customary shower tray, allows the creation of design solutions. A full range comprising 6 different lengths, various grill types and finishes to personalize any bathroom environment.

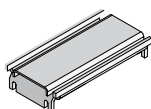
# linear drain LD

The system consists of a technical evacuation unit plus the chosen grating

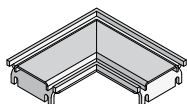
**Note:** Only the ABS version is supplied pre-assembled and its code includes siphon and grating.



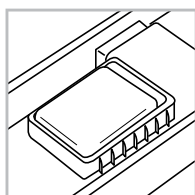
## ACCESSORIES:



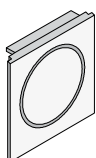
**Grating connector straight extension**  
90° Connection piece 10 cm



**Grating connector 90°**  
90° Connection da 10x10 cm



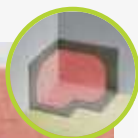
**I-Cube**  
4 pieces



**DRAIN PLUG**



## Security:



### Pre-glued waterproof collar

The system provides a waterproof membrane pre-glued to the rim, a time saving solution to reduce the risk of infiltration. To complete the waterproofing of the floor and wall, we advise to use as an alternative classic waterproofing systems the Foiltec waterproof membrane with its relative corner and connection pieces.

### Single unit of stainless steel

Technical evacuation system built out of a single piece, avoiding welding seams offering reliability and resistance over time.



### I-Cube

An ingenious system which reduces foam levels produced using the shower. It helps to keep the drain clean and releases a pleasant aroma. Not available for the Level 3 and Tile grating.



### Water outflow system

A patented system of water buffers, connected to the grating, manages the speed of the water run off from the central part in a controlled manner. This system is not present in the grating Level 3 and Tile.



### PLANO

IL= Polished Stainless Steel  
IS= Brushed Stainless Steel  
Suitable for coverings from 9 to 30 mm.



### TECHNIC

IX= Sand Stainless Steel  
Suitable for coverings from 9 to 30 mm.

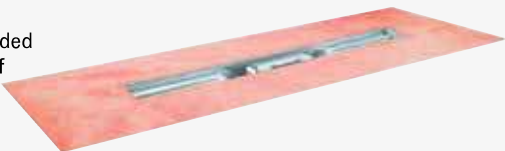


Available lengths: 60 - 70 - 80 - 90 - 100 - 120 cm



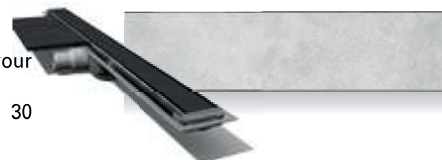
### LINEAR DRAIN

The siphon is provided with the waterproof membrane collar .



### TILE

Grating completed by the tile of your choice.  
Suitable for coverings from 9 to 30 mm.



### LEVEL 3

IS= Brushed Stainless Steel.  
Suitable for coverings from 3 to 30 mm.



### Materials

Drain:	Stainless Steel 316 or ABS 1,25 mm thick
Base and grating*:	Stainless Steel 304 3 and 1,5 mm thick
Outlet:	40 mm Diameter
Siphon:	ABS
Riser blocks (for height adjustment)	ABS

\* Grating available also in version 316 on request.

### Capacity

9 mm water column:	0,44 l/s - 26,41 l/m
--------------------	----------------------

### Sizes

Total height	54 mm (excluding floor covering)
Length:	60-70-80-90-100-120 cm
Grating width:	55 mm
Drain width:	86 mm
Floor covering thickness:	from 3 to 30 mm (based on choice of grating)